

For engineered autoclave bonding WSF offers

Lab Prototype and Production Model Composite Bonding Systems

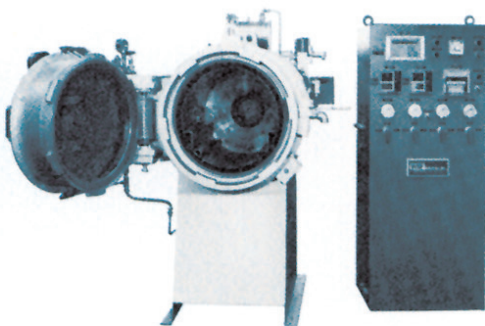
To meet the demands of the composite bonding industry, WSF Industries has developed an expertise in the engineering and manufacturing of autoclave systems in sizes ranging from lab units to full production RAPID/BONDER® models. Each WSF system is designed around specific bonding or curing specifications. In addition to advanced composites; WSF autoclaves are also used for bonded honeycomb parts, metal-to-metal bonding and glass laminating.

Standard Features of WSF Composite Bonders

- Controlled pressure and temperature
- Patented Rapidoor® closure for quick opening and closing production convenience
- ASME Code construction
- Programmed heating, cooling and pressure rates
- Electric heat
- Controlled circulated water cooling
- Internal fans provide forced air circulation
- Complete control package, including programmable controller and valving

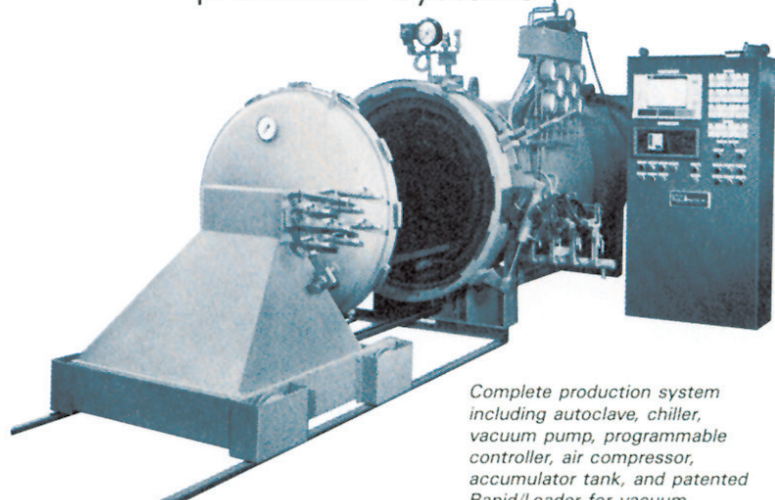
Complete Range of Sizes:

...from laboratory models



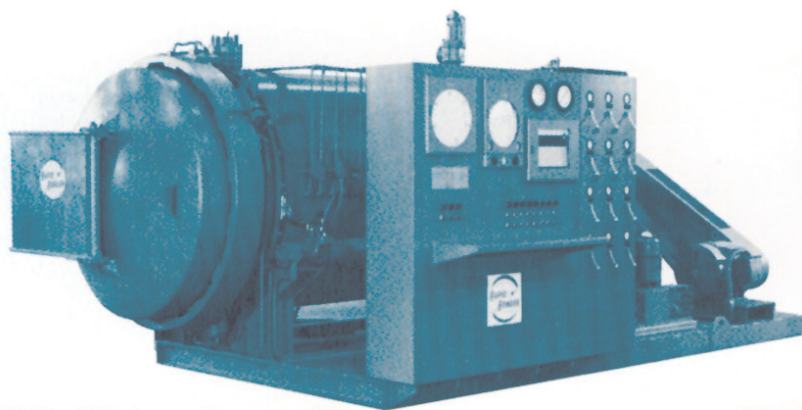
Laboratory unit for testing new materials used in satellites. Rated at 250 psig and 650°F.

...to full scale production systems

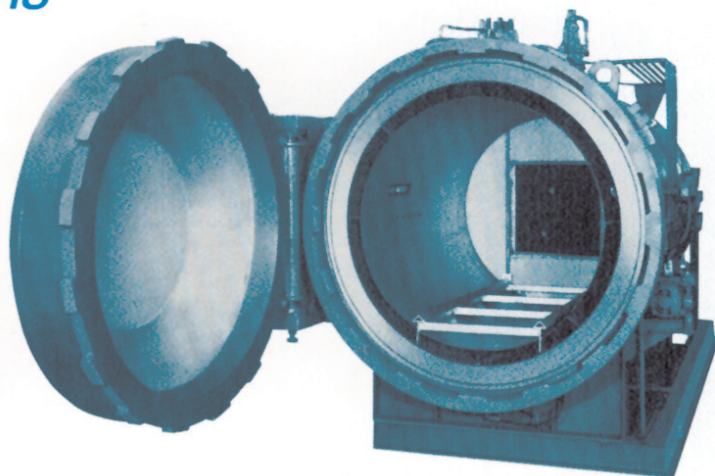


Complete production system including autoclave, chiller, vacuum pump, programmable controller, air compressor, accumulator tank, and patented Rapid/Loader for vacuum bagging operation.

Job-Proven Engineered Composite Bonding Systems



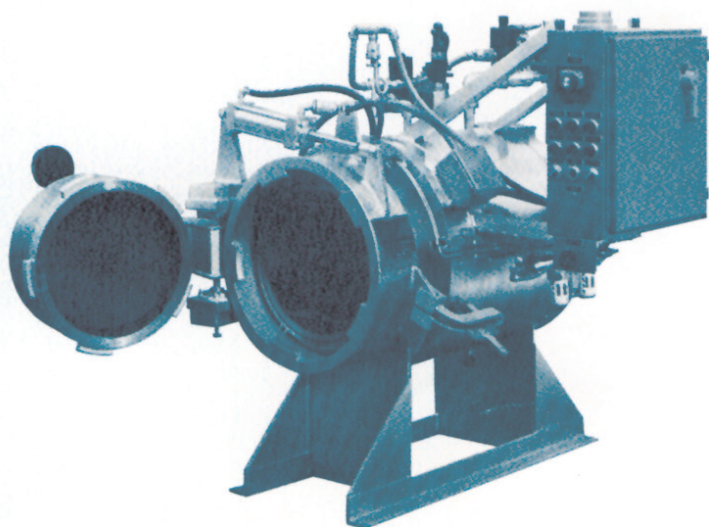
48" ID x 6'0" clear working space; 250 psig at 650°F; includes heating and cooling coils, internal fan, process controls, and vacuum pump.



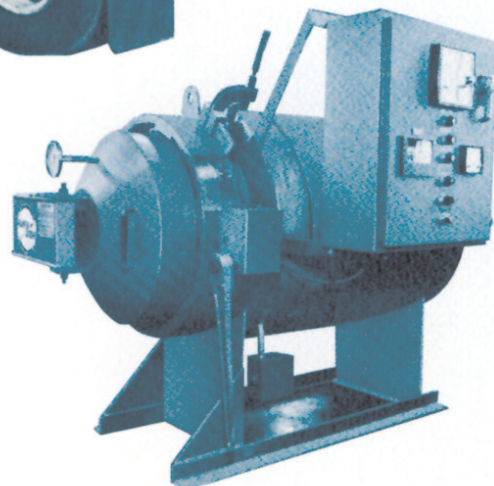
60" ID vessel with Rapidoor®, internal duct, cooling coil, thermocouple connectors, and internal track.



Large production unit with davited door, bridge, heating and cooling systems for manufacturing of aerospace components.



Laboratory unit has 14" high x 24" long work space; rated at 150 psig and 750°F; includes indicating temperature controller, electric heat, and circulating fan.



Production unit for small parts; unit rated at 250 psig and 650°F; includes fan, heating, cooling, and temperature pressure controller.

WSF Industries, Inc.
P.O. Box 400, Kenmore Branch, Buffalo, NY 14217
Phone: 716-692-4930 • Fax: 716-692-4135
E-Mail: sales@wsfindustries.com
Call Toll-Free: 1-800-874-TANK (8265)
www.WSFindustries.com

WSF
Industries, Inc.