

For undersea pressure testing, WSF offers

Hydrostatic Test Systems to Simulate Various Ocean Depths

WSF Hydrostatic Test Systems make undersea pressure conditions readily accessible for a great number of purposes. These include...

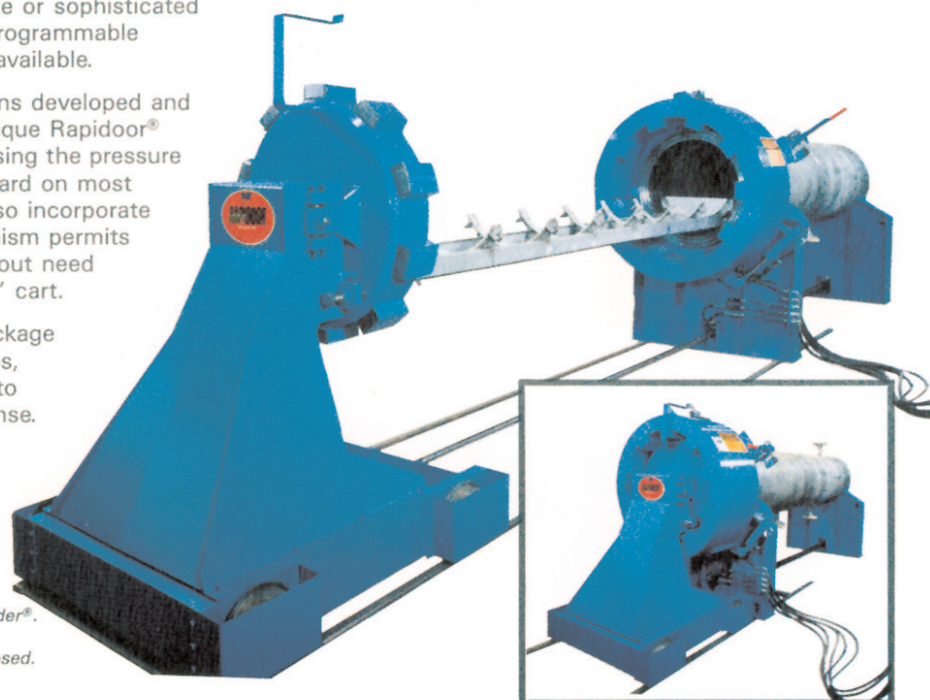
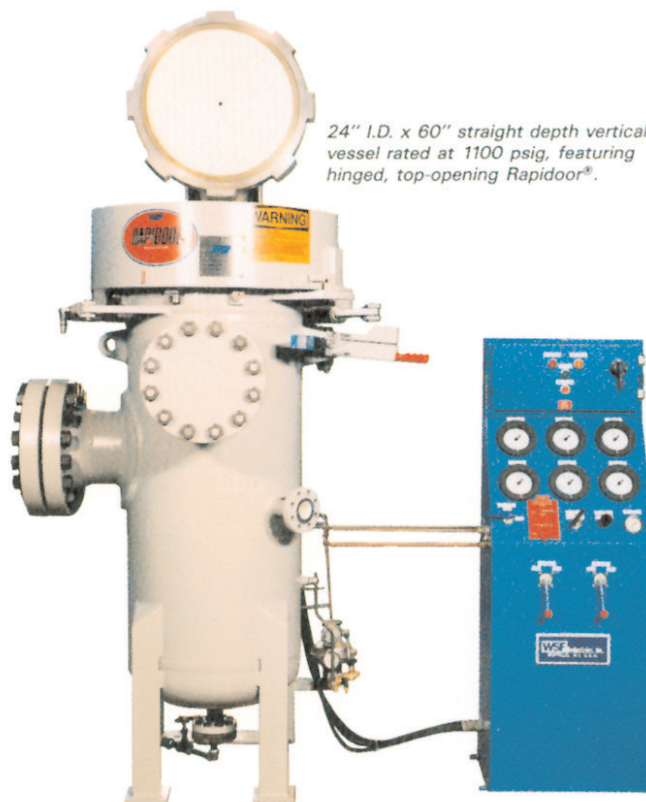
- Oceanographic research projects
- Materials evaluation
- Deep-sea instrument performance checks
- Pressure-testing undersea hardware parts and assemblies

All key components, including the pressure vessels, are manufactured in our facility. This allows us to custom-build units quickly and economically to your exact specifications. We can make them in almost any size desired, in horizontal or vertical configurations, and with simple or sophisticated controls. Components and controls for programmable pressure and temperature variations are available.

Our systems include numerous innovations developed and patented by WSF over the years. Our unique Rapidoor® quick access closure for opening and closing the pressure chamber in a matter of seconds is standard on most units. Many Hydrostatic Test Systems also incorporate our patented Rapid/Loader®. This mechanism permits fast, exterior loading and unloading without need for a pit, bridge, or external "piggy-back" cart.

Each system is delivered as a complete package with valves, gauges, instruments, pumps, and controls pre-assembled as practical to minimize your installation time and expense.

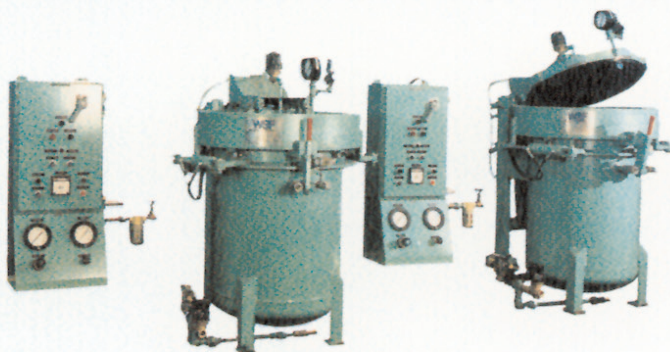
24" I.D. x 60" straight depth vertical vessel rated at 1100 psig, featuring hinged, top-opening Rapidoor®.



27" I.D. x 10' long horizontal vessel with Rapid/Loader®. Made of 316 stainless steel and rated at 2000 psig.

(inset) With rail-mounted carriage and Rapidoor® closed.

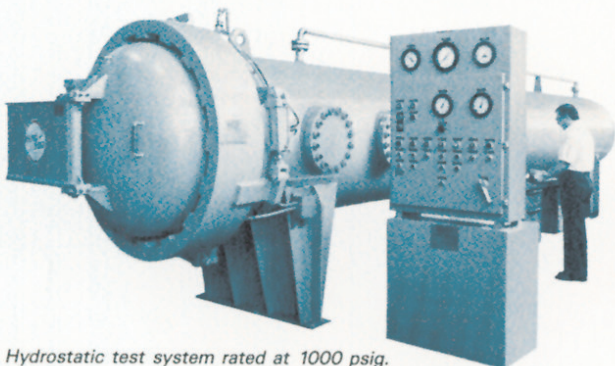
Custom-Built Hydrostatic Test Systems



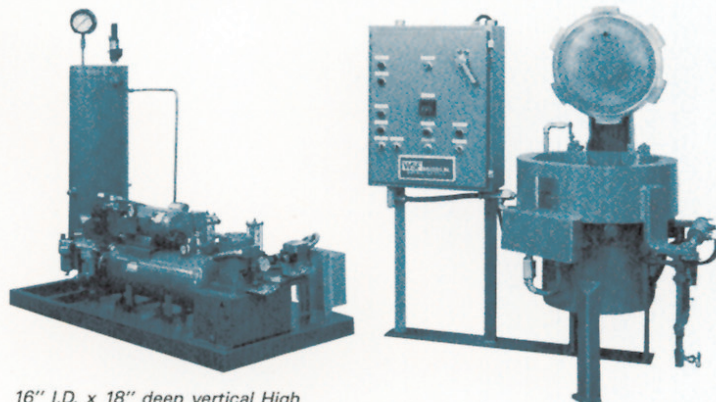
Twin 29" I.D. hydrostatic test units with individual control consoles. Combination of stainless steel and carbon steel construction. Each rated at 350 psig.



18" I.D. x 36" straight shell depth. Rated at 1100 psig. Post Davit Rapidoor and jib crane hoist.



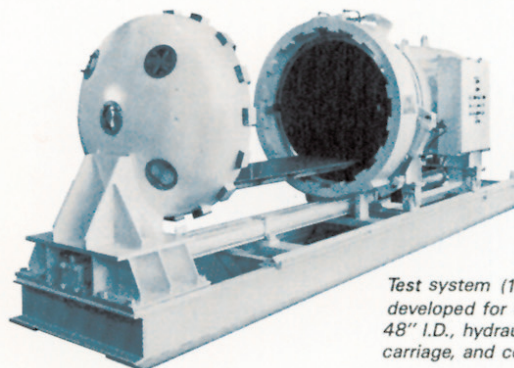
Hydrostatic test system rated at 1000 psig. 48" I.D. x 30' straight shell length.



16" I.D. x 18" deep vertical High Pressure Test System rated at 1000 psig with accumulator, intensifier system and controls.



Hydrostatic test vessel with special rail-mounted carriage and free-standing, hingeless Rapidoor®.



Test system (1000 psig) developed for U.S. Navy. 48" I.D., hydraulic Rapid/Loader® carriage, and control panel.

WSF Industries, Inc.
 P.O. Box 400, Kenmore Branch, Buffalo, NY 14217
 Phone: 716-692-4930 • Fax: 716-692-4135
 E-Mail: sales@wsfindustries.com
 Call Toll-Free: 1-800-874-TANK (8265)
www.WSFindustries.com

WSF
Industries, Inc.